

IMMERGAS SE INTERNAL BOILER

MANUFACTURED BY:

 **IMMERGAS**

Wall hung traditional hydronic system boiler for indoor installation

- Sealed room fan assisted model with a 36 kW heat output
- Compact dimensions
- Automatic system by-pass
- D.H.W. Storage Tank (optional)
- Electronic control board microprocessor driven
- Electronic ignition and full modulation
- Diagnostic and performance display
- Intelligent External Controller CAR^{v2} with outside sensor (optional)

2 YEAR*
WARRANTY



MEASUREMENTS

725 x 520 x 250 (H x W x D) mm
Empty appliance weight - 43 kg.

MAIN FLUE KITS

Horizontal concentric kit 60/100 - 3.017736
Vertical concentric kit 60/100 - 3.015631 (Terracotta).

MAIN OPTIONS

CAR^{v2} - 3.021395
External Sensor - 3.014083
Storage tank connection kit - 3.020934.

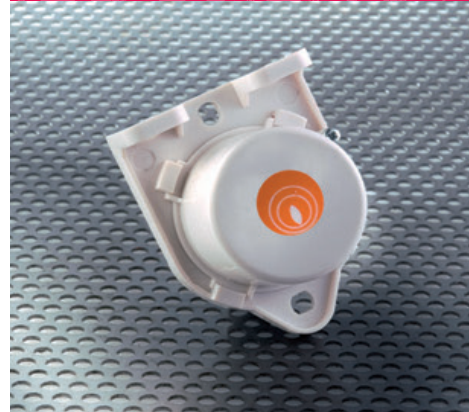


HUNT
HEATING

CAR^{v2}



EXTERNAL SENSOR



 **SAI GLOBAL**

SHOWROOM

11 Fiveways Boulevard
Keysborough
VIC 3173

PHONE 1300 00 1800

FAX (+613) 9798 5133

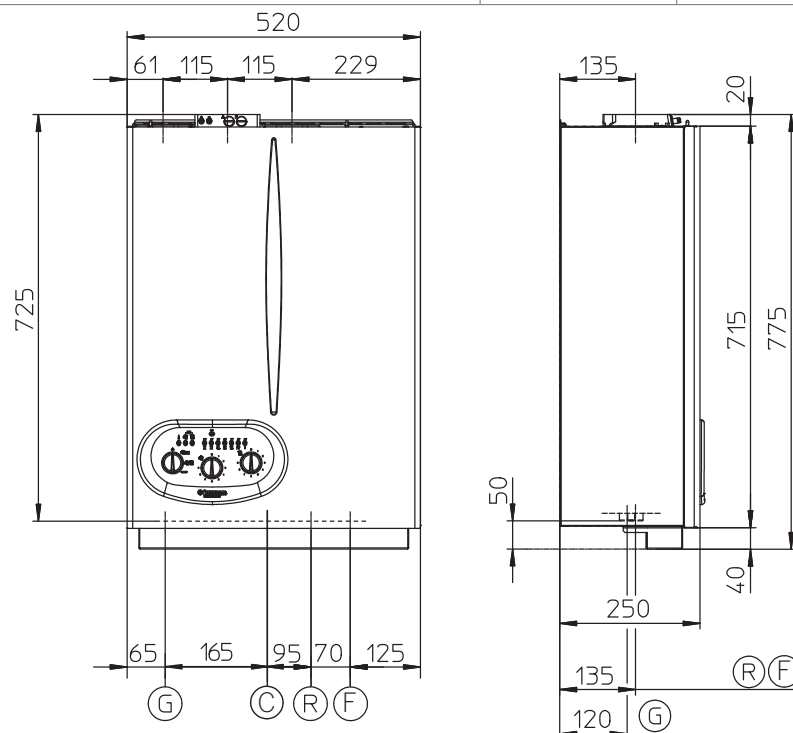
enquiries@huntheat.com.au



HUNT HEATING
The smart choice.

www.huntheat.com.au

Model	Code NG./LPG	Heat output kW	Efficiency at nom. heat output	Protection index
SE 32 kW	IMG SE 32+ I NG IMG SE 32+ I LPG	36	87.3%	IPX5D
COMBUSTION PARAMETERS				
			NG (G20)	LPG (G30)
Supply Pressure	kPa		1.0	2.8
Flue temperature at nominal output	°C		67	68
TECHNICAL DATA				
Heat output NG	mJ/h (kW)		128.5 (35.7)	
Heat output LPG	mJ/h (kW)		128.5 (35.7)	
Burner pressure maximum NG/LPG	kPa		0.70 / 2.10	
Burner pressure minimum NG/LPG	kPa		0.19 / 0.55	
Efficiency 80/60 Nom./Min.	%		87.30	
Efficiency 50/30 Nom./Min.	%		93.20	
Adjustable central heating temperature	°C		35 - 85	
Expansion vessel factory-set pressure	bar		1	
Pressure relief setting	bar (psi)		3 (44)	
Expansion vessel capacity	L		10	
Head available with 1000 l/h flow rate	kPa (m H ₂ O)		30.2 (3.1)	
Electrical connection	V/Hz		230 / 50	
Installed electric power	W		180	
Maximum flue length 60/100	m		V 4.7 / H 3.0	
Maximum flue length 80/80	m		V40 / H 20	



Key:

- G - Gas supply
- R - Return - CH
- F - Flow - CH
- C - Cold fill

Height (mm)	Width (mm)	Depth (mm)
725	520	250
CONNECTIONS		
COLD INLET	GAS	SYSTEM
C	G	R F
1/2"	3/4"	3/4" 3/4"

